

Discovery Guide



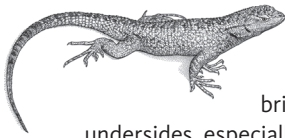
WILLIAM S.
HART
MUSEUM

NATURE AT THE HART

The former ranch residence of famed silent film star, William S. Hart, was bequeathed to Los Angeles County for the benefit of the public. The park has 265 acres of land which includes an animal barnyard, hiking trails, and a herd of American Bison.

NATIVE ANIMALS

Cottontail Rabbits have light brown, thick, furry coats with short white tails. While you might see them during the day, the best times to spot them are at dawn, dusk, or at night when they are most active. Look for them in open grassy areas or even in your backyard.



Western Fence Lizards

are also known as “blue bellies,” which refers to the bright blue markings on their undersides, especially on adult males. They are generally gray-brown to black, and often found basking in the sun along the trail to the Museum. Males can be observed doing “push-up” displays to defend territory and attract females.

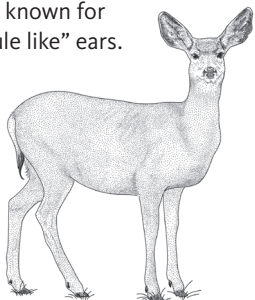
The **California Scrub-Jay** is often mistakenly called a Blue Jay because of its vibrant blue color. You can spot one by its blue coloring, white throat, and olive-gray back. The best place to spot a California Scrub-Jay is in the oak trees.

Red-tailed Hawks are usually seen soaring in the sky or perched on the tree tops. Three things to look for are the transparent red tail that looks pale orange on the underside, a dark brown belly band, and a black bar on the fore edge of the wing.



Turkey Vultures are easy to locate. Look for a black body, red head, and grayish feathers on the underside of the wings. They are usually seen soaring in wide circles with their two-toned wings spread in the shape of a broad “V.”

Mule Deer are not easily seen wild in the park because they typically can hear you before you see them. They are known for their black tipped tails and “mule like” ears.



BECOME A MEMBER TODAY

Enjoy discounts at the Museum Stores, summer camps, classes, and more. Plus, you also get free admission to the La Brea Tar Pits and Museum, and the Natural History Museum!

Call 661.254.4584 for information.

HELP KEEP WILDLIFE WILD

Please don't feed the wild animals.

HELP PROTECT OUR TREASURES

Please do not eat or drink inside the Museum. Crumbs and spills can attract bugs and pests that can damage our objects and artifacts. William S. Hart Park and Museum are a smoke-free environment.

WHERE TO EAT

Picnics are welcome in the picnic area east of the Bunk House. The nearest food for purchase can be found in downtown Newhall.

Be Our Guest

HOURS

Fall/Winter (Labor Day to Memorial Day) Park open daily until 5 pm

Museum open Wednesday–Friday, 12–3 pm with free tours every 30 minutes.

Saturday–Sunday, 11 am–3 pm with free tours every hour on the hour.

Summer (Memorial Day to Labor Day) Park open daily until 7 pm

Museum open Wednesday–Sunday, 11 am–4 pm with free tours every hour on the hour.

Spanish language tours available one day each month. Call 626.254.4584 for details and schedule.

GUEST SERVICES

First Aid and Lost & Found

Contact a Museum or Park staff member for assistance.

Photography

Photography for personal use is allowed except in designated areas. No flash or videotaping please. Commercial photography is not permitted.

Accessibility assistance

Hart's home was built to accommodate a resident with a wheelchair (Mary Ellen, Hart's sister), so the majority of the house is accessible, with advance notice. Parking is available behind the home for any guest who cannot hike the Nature Trail. For a parking pass, or to arrange an accessible tour, please contact Museum staff at 626.254.4584 prior to visiting.

Institutional Partner



NATIVE PLANTS

Coast Live Oak trees have oval, evergreen leaves with toothy margins.



Coast Live Oak

Valley Oak trees have deeply lobed (or sectioned), somewhat dull green leaves that are shed in winter.



Valley Oak

Both types of oak trees can reach massive sizes and live for hundreds of years, providing vital habitat for wildlife and welcome shade for us.

Chaparral Yucca have sharp, spine-tipped green or blue-gray leaves. In spring, this spiky species produces stunning flower stalks up to 15 feet high, laden with creamy white blossoms. Each rosette blooms just once, then dies.



Purple Sage

Purple Sage, a true sage, has fragrant gray-green leaves and lavender-purple flowers in spring. Bees and hummingbirds are common visitors.

California Sagebrush, sometimes called coastal sage, has pungent, feathery gray leaves and tiny yellowish flowers in summer.

As you walk along the Hart trails, you can also make a real contribution to scientific research by photographing your wildlife observations and uploading them to **iNaturalist.org**, where they can be used by scientists to better understand the local biodiversity.

HART TRAILS

Hart Park has four trails that you are welcome to hike. Each trail begins with the Nature Trail and leads up to the trail behind the Hart Museum. From this point, the hiking trail separates into three different trails: the Bison Trail, Fritz Road, and Lisbeth Road.

- Nature Trail **10 minutes (.25 mi)**
The Nature Trail begins at the trail head near the Ranch House and continues to the Museum. Along the Trail, enjoy the Bunk House, American Bison, and scenic views of the valley.
- Bison Trail **40 minutes (.78 mi)**
This trail veers to the right of the Hart property and leads to the bottom of the 25-acre bison enclosure. Stop and enjoy the bison in their natural grazing state before heading back up the trail.
- Fritz Road **20 minutes (.45 mi)**
Continue straight ahead at the intersection of the three trails. This trail leads to the campgrounds and is available for both hikers and horseback riders.
- Lisbeth Road **10 minutes (.24 mi)**
Lisbeth Road bends to the left at the trail intersection. This trail also leads to the campgrounds, but is a shorter, steeper trail than the Campground Trail. It is used as an access road for emergency vehicles when required.

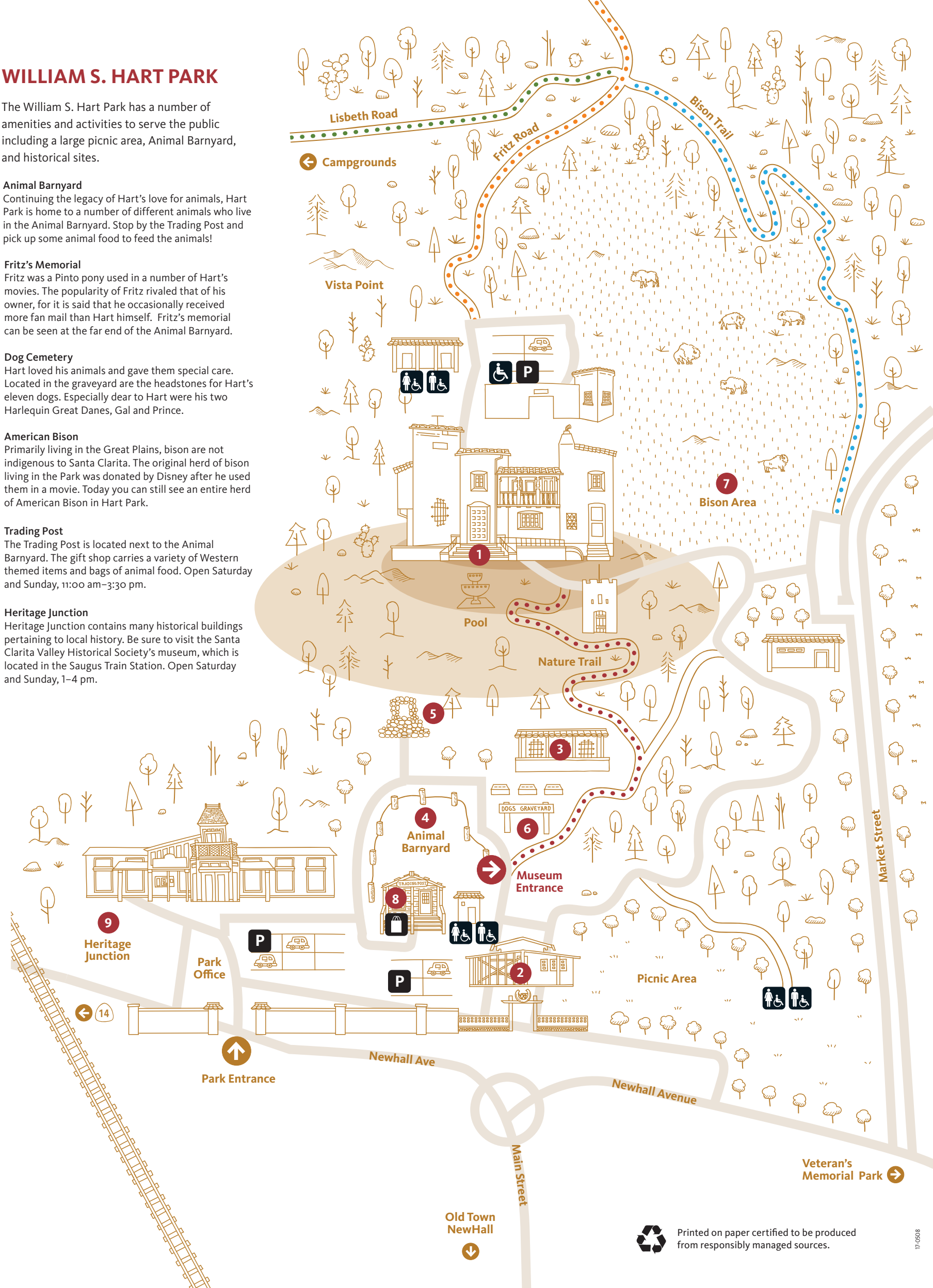
WILLIAM S. HART MUSEUM

- 1 Museum**
The William S. Hart Museum was originally the Spanish Colonial Revival Style mansion for famed silent film star, William S. Hart. Exhibited in the Museum's collection are artwork by Charles M. Russell and Frederic Remington, sculptures by Charles C. Christodoro, photographs of famous actors and actresses, and artifacts representing various Native American tribes. *Entrance to the Hart Museum is by free guided tour only.*
- 2 Ranch House**
Built in 1910, the Ranch House was Hart's original Newhall home and was sometimes used as a location for Hart's films. Currently, the Ranch House showcases original furnishings, film props, and equestrian equipment. Take a self-guided tour during Museum operating hours.
- 3 Bunk House**
The Bunk House was used as a guesthouse and home for ranch workers. It was also used as a game room and storage for Hart's movie and personal mementos.

WILLIAM S. HART PARK

The William S. Hart Park has a number of amenities and activities to serve the public including a large picnic area, Animal Barnyard, and historical sites.

- 4 Animal Barnyard**
Continuing the legacy of Hart's love for animals, Hart Park is home to a number of different animals who live in the Animal Barnyard. Stop by the Trading Post and pick up some animal food to feed the animals!
- 5 Fritz's Memorial**
Fritz was a Pinto pony used in a number of Hart's movies. The popularity of Fritz rivaled that of his owner, for it is said that he occasionally received more fan mail than Hart himself. Fritz's memorial can be seen at the far end of the Animal Barnyard.
- 6 Dog Cemetery**
Hart loved his animals and gave them special care. Located in the graveyard are the headstones for Hart's eleven dogs. Especially dear to Hart were his two Harlequin Great Danes, Gal and Prince.
- 7 American Bison**
Primarily living in the Great Plains, bison are not indigenous to Santa Clarita. The original herd of bison living in the Park was donated by Disney after he used them in a movie. Today you can still see an entire herd of American Bison in Hart Park.
- 8 Trading Post**
The Trading Post is located next to the Animal Barnyard. The gift shop carries a variety of Western themed items and bags of animal food. Open Saturday and Sunday, 11:00 am-3:30 pm.
- 9 Heritage Junction**
Heritage Junction contains many historical buildings pertaining to local history. Be sure to visit the Santa Clarita Valley Historical Society's museum, which is located in the Saugus Train Station. Open Saturday and Sunday, 1-4 pm.



Legend

- Accessible Restroom
- Wheelchair Accessible
- Store
- Parking
- Trail
- Paved road